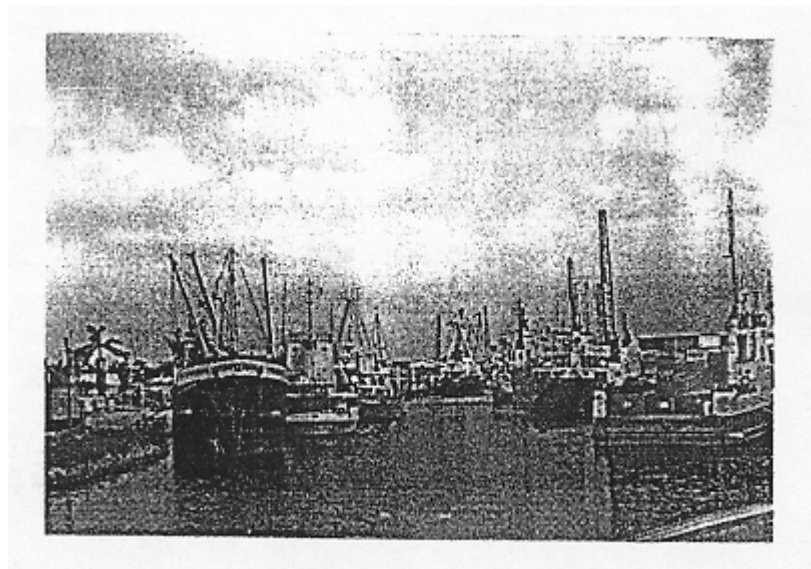


# **MAST ACADEMY OUTREACH**

**MIDDLE SCHOOL PROGRAM**

## **Miami River Run**

**On-site Package**



**MAST Academy**

**Maritime and Science Technology High School  
Miami-Dade County Public Schools**

**Miami, Florida**

# **MAST ACADEMY OUTREACH PROGRAM**

## **Middle School Program**

### **Miami River Run On-Site Packet**

#### **Table of Contents**

Teacher Instructions	1
Miami River Map 1 – Downtown Area	3
Miami River Map 2 – Residential and Mixed-Use Area	4
Miami River Map 3 – Shipping and Industrial Area	5
River Personalities	7
Answer Key	9
Acknowledgements	12
Resources	12

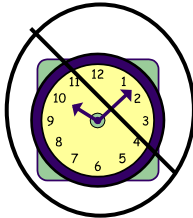


## Teacher Instructions



Make a copy of the on-site package for each of your students. **Do not copy the answer key on page 9.** Review the Miami River maps on pages 2-4 prior to the day of the trip so your students are familiar with sites they will see on the river. Students must have the on-site package with them the day of the trip.

Each student will need a pencil or pen. A clipboard for each student is recommended. Students are encouraged to bring cameras.



Plan to arrive at the Island Queen dock in Bayside by 9:30 a.m. since the boat will depart promptly at 9:45 a.m. The River Run Tour lasts approximately two hours.

You may bring a bag lunch and drinks and eat while on the cruise, or you may eat at Bayside after the cruise. Only chips, candy, and soft drinks are available on the Island Queen.



### Safety Checklist

Discuss boating safety with your students.

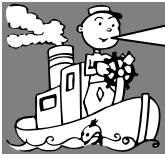
1. Stay away from the dock edge.
2. Horseplay on the dock or aboard the boat.
3. Board and depart the boat in an orderly manner.
4. Remain seated unless otherwise directed.
5. Note where lifejackets are stored.
6. Listen to the captain's and/or narrator's safety instructions.

Student directions are preceded by the icon to the right.





# Miami River Run



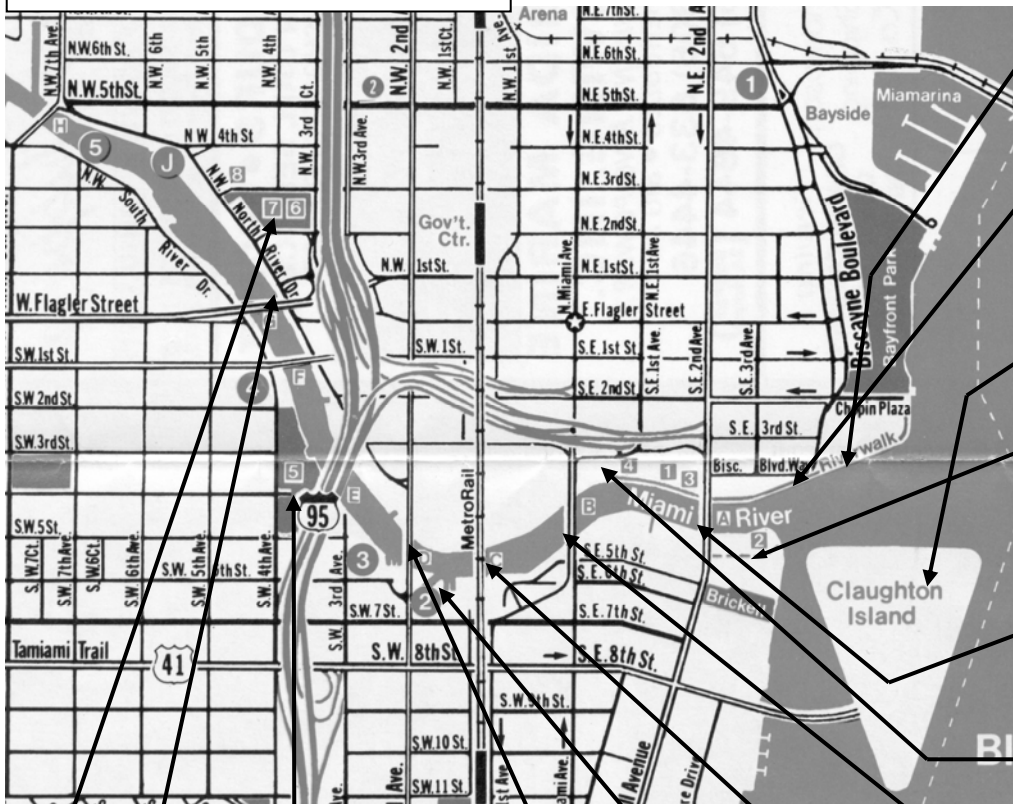
As you cruise up the Miami River, your narrator will highlight and discuss important sites along the river. Starting at the right side of the map, circle the term or phrase that is true about each site and follow the arrows. There are three maps, one for each section of the river. When you reach the 5<sup>th</sup> St. Bridge, turn the page to the next map.

## MAP 1

**START HERE**

### Downtown from Biscayne Bay to 5<sup>th</sup> Street Bridge

"C2001 by Richard Troutner. All Rights Reserved."



**1. Miami River Greenway**  
a. shipping area  
b. riverwalk area

**2. Rip rap**  
a. increases wave energy  
b. reduces wave energy

**3. Claughton Island**  
a. man-made  
b. natural

**4. Miami Circle**  
a. over 2000 years old  
b. less than 2000 years old

**5. Brickell Bridge**  
a. fixed  
b. bascule

**6. Flagler House**  
a. built in 1897  
b. built in 1983

**7. South Miami Ave. Bridge**  
a. fixed  
b. bascule

**8. MetroRail**  
a. fixed  
b. bascule

**9. Manatee bumpers**  
a. prevent manatee injuries  
b. cause manatee injuries

**10. S.W. 2<sup>nd</sup> Ave. Bridge**  
a. fixed  
b. bascule

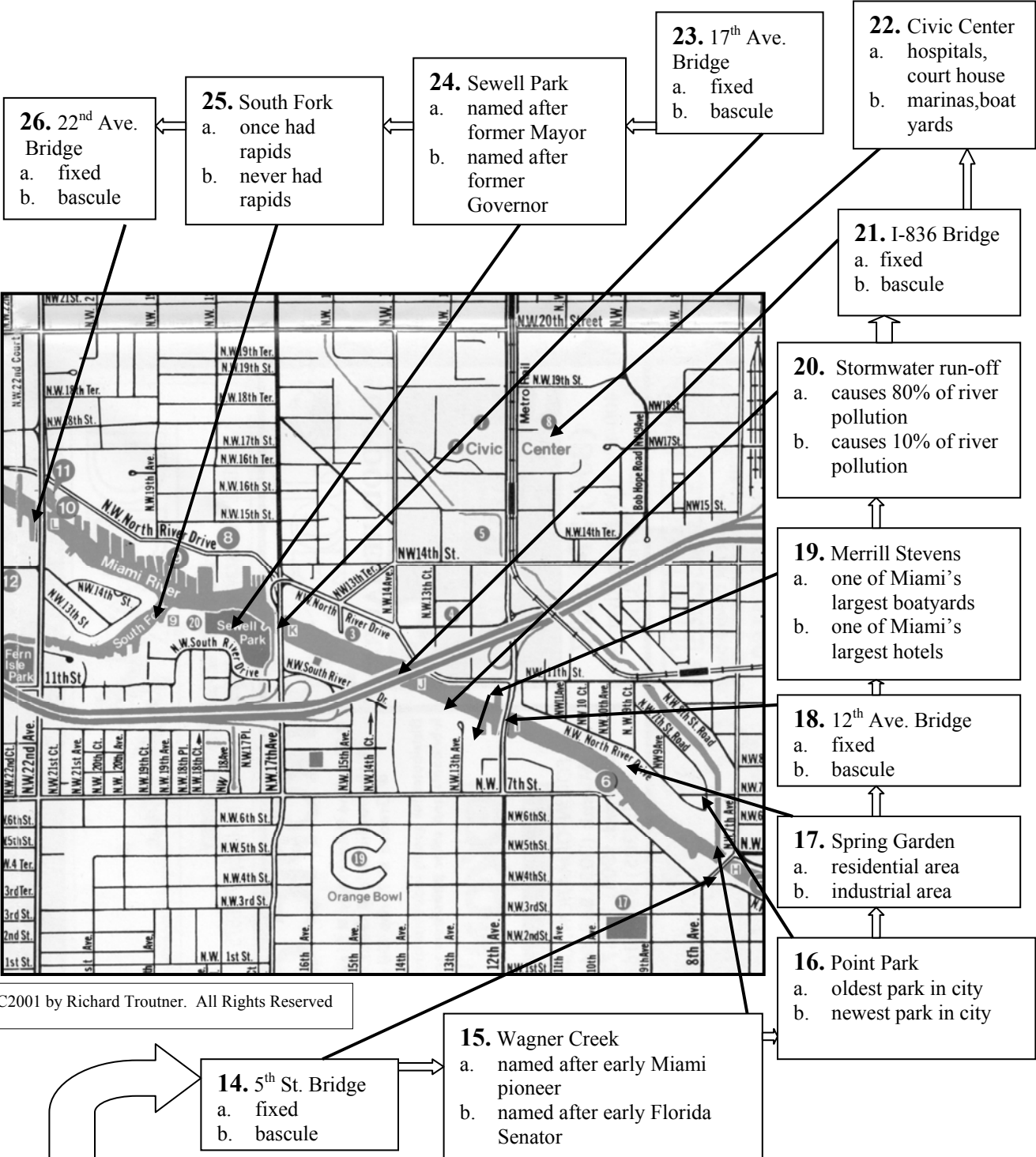
**11. Jose Marti Park**  
a. named after Cuban Independence hero  
b. named after first Florida governor

**12. Flagler St. Bridge**  
a. fixed  
b. bascule

**13. Lummus Park**  
a. first park in Miami  
b. newest park in Miami

**MAP 2**

**Residential and Mixed-Use Area from 5<sup>th</sup> Street Bridge to N.W. 22 Ave.**



"©2001 by Richard Troutner. All Rights Reserved"

**CONTINUE HERE**

**MAP 3**

**Shipping and Marine Industrial Area from N.W. 22 Ave to N.W. 36<sup>th</sup> St.**

**33.** Antillean Marine  
 a. one of the largest river shipping companies  
 b. one of the largest river boat marinas

**32.** Dredging  
 a. will allow ships to carry more cargo  
 b. won't allow ships to carry more cargo

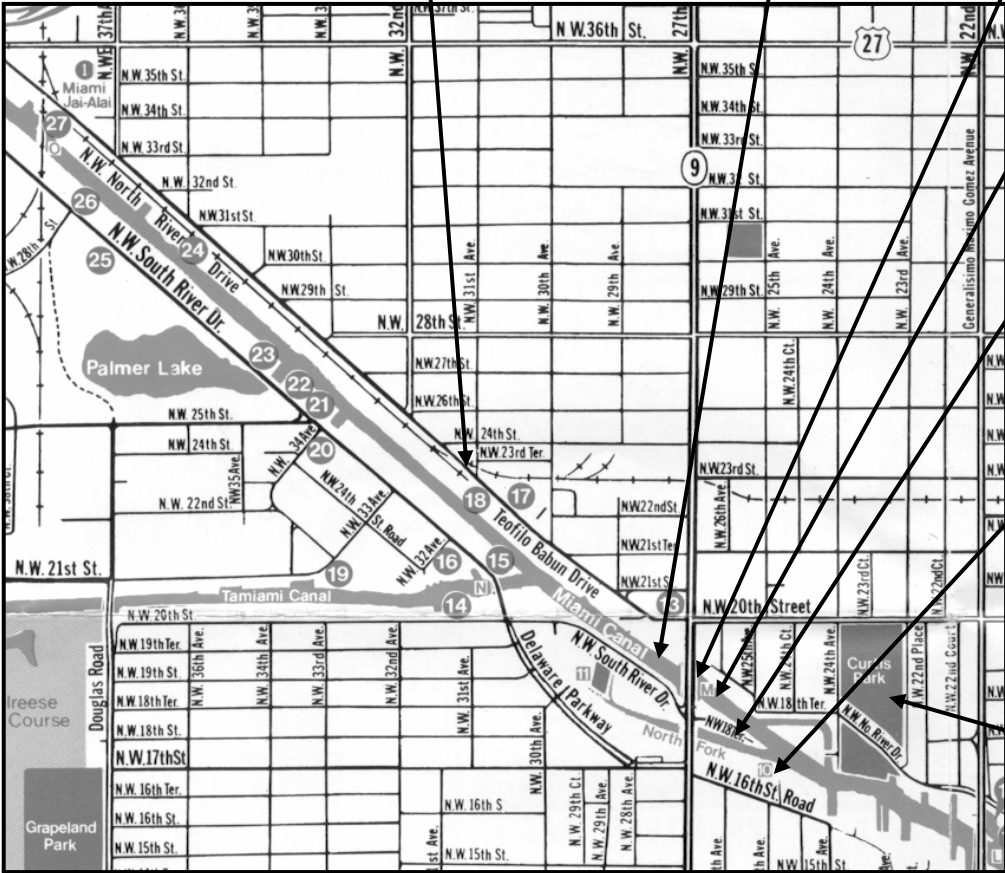
**31.** 27<sup>th</sup> Ave. Bridge  
 a. fixed  
 b. bascule

**30.** Miami Canal  
 a. man-made waterway  
 b. natural waterway

**29.** North Fork  
 a. once had rapids  
 b. never had rapids

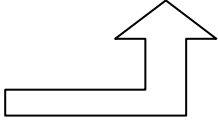
**28.** Musa Isle  
 a. once an Indian village for tourists  
 b. once a boatyard

**27.** Curtis Park  
 a. allows boat launching  
 b. does not allow boat launching



"©2001 by Richard Troutner. All Rights Reserved."

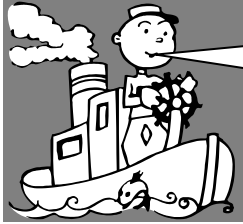
**CONTINUE HERE**







## River Personalities



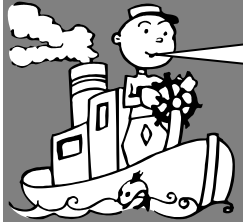
Help the Miami River Commission to promote the Miami River by creating postcards for the river's three "personalities." On the front of each of the postcards below, draw a picture that you feel best represents each of the river's three personalities. On the back of each postcard, write a short caption describing each picture.

*Miami River:  
Shipping and  
Industrial*

*Miami River:  
Residential*

*Miami River:  
Downtown*

## River Personalities



Below are the backs of your postcards. On the left side of each postcard, write a note to a person you would send these to describing the sites along each area or personality of the river.

<p><b>Miami River: Shipping and Industrial Area</b></p> <hr/> <hr/> <hr/>	<p><b>STAMP</b></p>
---	---------------------

<p><i>Miami River: Residential</i></p> <hr/> <hr/> <hr/>	<p><b>STAMP</b></p>
--	---------------------

<p><i>Miami River: Downtown</i></p> <hr/> <hr/> <hr/>	<p><b>STAMP</b></p>
---	---------------------

**ANSWER KEY (99 TOTAL POINTS)**

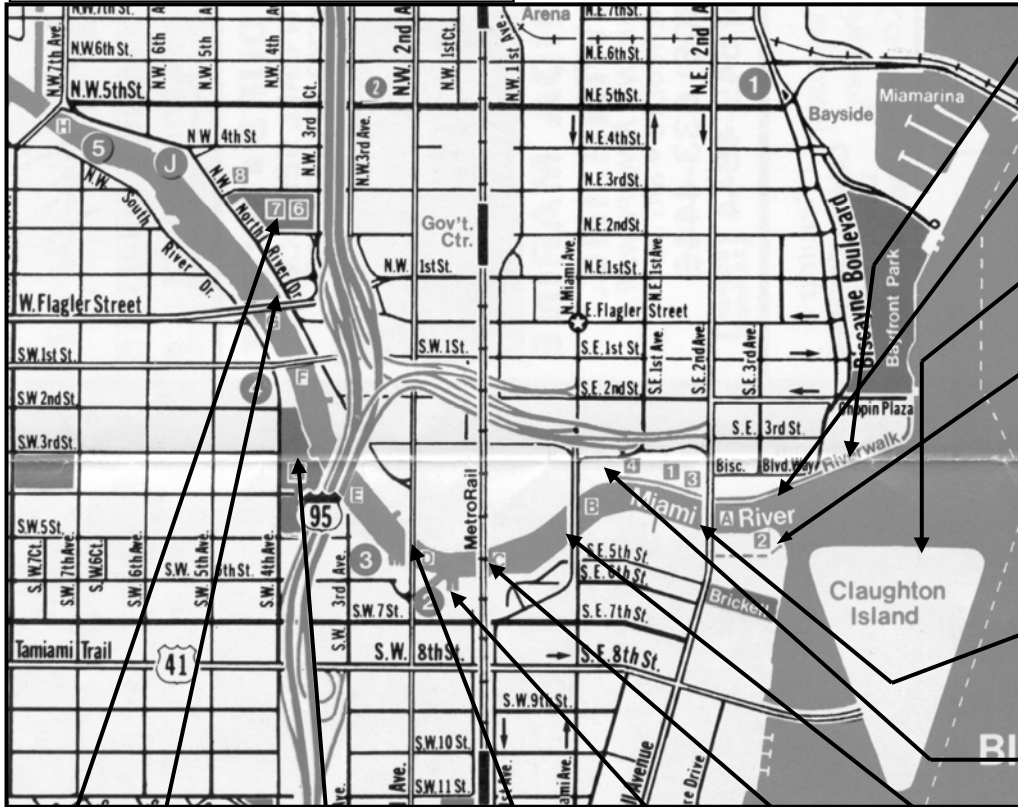
**2 points for each correct answer on the maps ( answers are underlined);  
4 points for each postcard picture; 5 points for each postcard caption**

**MAP 1**

**START HERE**

**Downtown from Biscayne Bay to 5<sup>th</sup> Street Bridge**

"©2001 by Richard Troutner. All Rights Reserved."



**1. Miami River Greenway**  
a. shipping area  
b. riverwalk area

**2. Rip rap**  
a. increases wave energy  
b. reduces wave energy

**3. Cloughton Island**  
a. man-made  
b. natural

**4. Miami Circle**  
a. over 2000 years old  
b. less than 2000 years old

**5. Brickell Bridge**  
a. fixed  
b. bascule

**6. Flagler House**  
a. built in 1897  
b. built in 1983

**7. South Miami Ave. Bridge**  
a. fixed  
b. bascule

**8. MetroRail**  
a. fixed  
b. bascule

**9. Manatee bumpers**  
a. prevent manatee injuries  
b. cause manatee injuries

**10. S.W. 2<sup>nd</sup> Ave. Bridge**  
a. fixed  
b. bascule

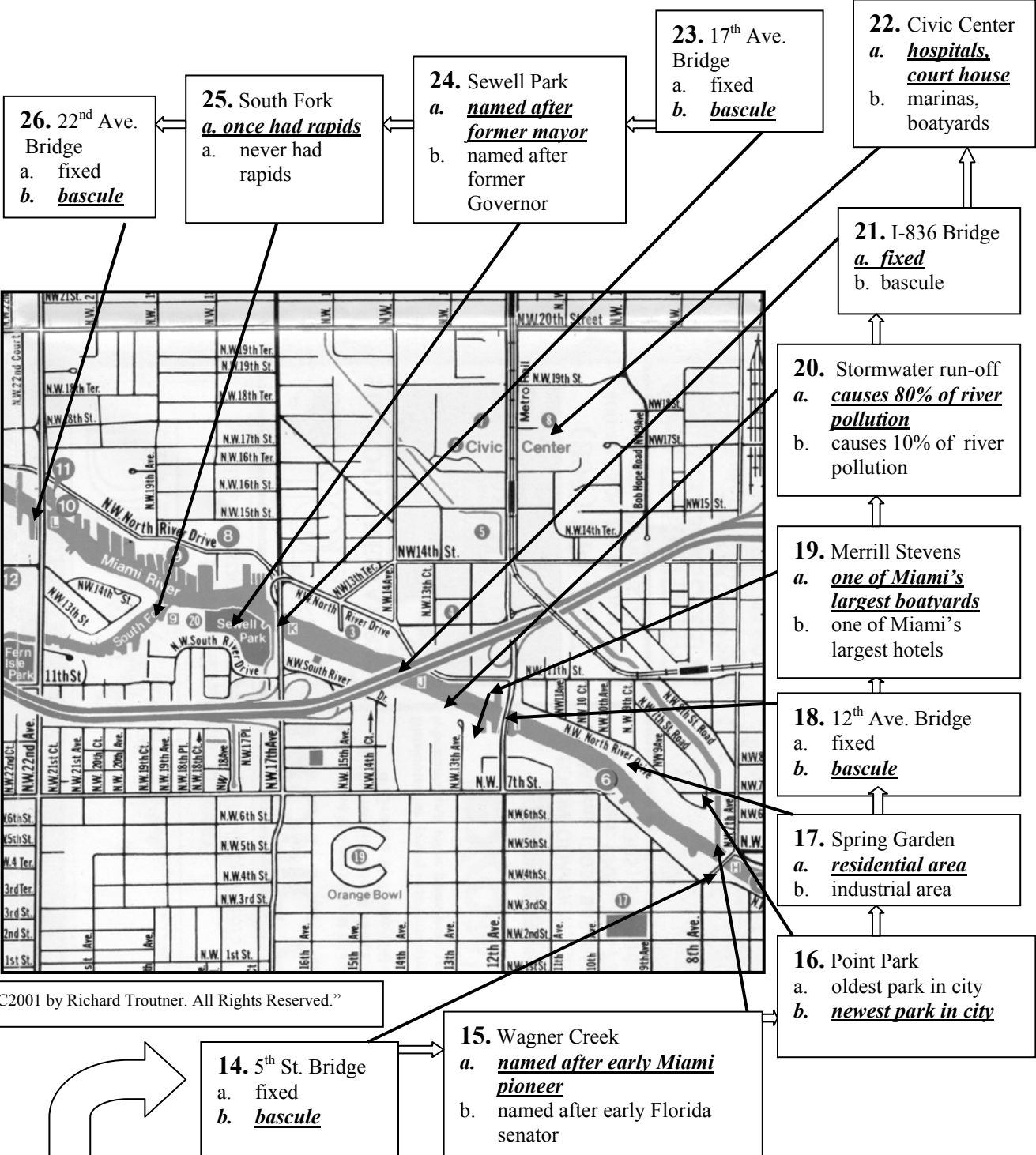
**11. Jose Marti Park**  
a. named after Cuban Independence hero  
b. named after first Miami Governor

**13. Lummus Park**  
a. first park in Miami  
b. newest park in Miami

**12. Flagler St. Bridge**  
a. fixed  
b. bascule

MAP 2

Residential and Mixed-Use Area from 5<sup>th</sup> Street Bridge to N.W. 22 Ave.  
ANSWER KEY



"©2001 by Richard Troutner. All Rights Reserved."

CONTINUE HERE

**MAP 3**

**Shipping and Marine Industrial Area from N.W. 22 Ave to N.W. 36<sup>th</sup> St.  
ANSWER KEY**

**33.** Antillean Marine  
 a. one of the largest river shipping companies  
 b. one of largest river boat marinas

**32.** Dredging  
 a. will allow ships to carry more cargo.  
 a. won't allow ships to carry more cargo

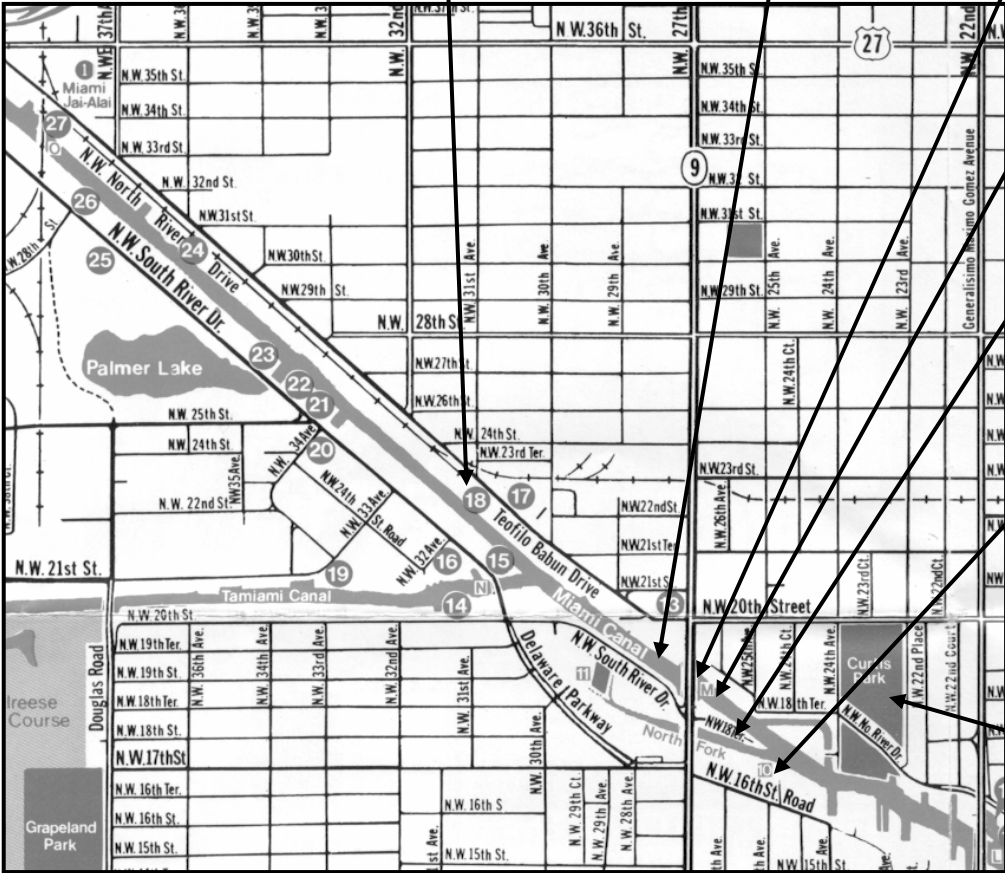
**31.** 27<sup>th</sup> Ave. Bridge  
 a. fixed  
 b. bascule

**30.** Miami Canal  
 a. man-made waterway  
 b. natural waterway

**29.** North Fork  
 a. once had rapids  
 b. never had rapids

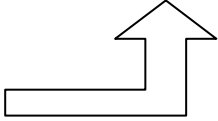
**28.** Musa Isle  
 a. once an Indian village for tourists  
 b. once a boatyard

**27.** Curtis Park  
 a. allows boat launching  
 b. does not allow boat launching



“C2001 by Richard Troutner. All Rights Reserved.”

**CONTINUE HERE**



## **Acknowledgements**

We would like to thank the Board of County Commissioner, the Miami-Dade County Department of Resource Management (DERM), Miami-Dade Water and Sewer Department (MDWASD) and the Department of Solid Waste Management (DSWM) for funding the environmental Miami River Tours. We would also like to thank the Miami River Commission with support from the City of Miami for their partnership in providing the Miami River tours.

## **Resources**

Gaby, Donald C. An Historical Guide to The Miami River and Its Tributaries. C1990 by The Historical Museum of Southern Florida.

Miami River Commission's 2001 Miami River Economic Report, available at [www.miamirivercommission.org](http://www.miamirivercommission.org).

Miami River Commission's Stormwater Subcommittee's "Water Quality Improvement Report," available at [www.miamirivercommission.org](http://www.miamirivercommission.org).

"Miami River Map and Guide," Seaport Map Company, 1990, available through the Miami River Commission, e-mail, [mrc@rsmas.miami.ed](mailto:mrc@rsmas.miami.ed).

"Miami-Dade County Manatee Protection Plan," available from the Department of Environmental Resource Management, (305) 372-6789.

One Voice for the River. Spring 2000 Report. Miami River Commission.

The School Board of Miami-Dade County, Florida, adheres to a policy of nondiscrimination in employment and educational programs/activities and strives affirmatively to provide equal opportunity for all as required by:

**Title VI of the Civil Rights Act of 1964** - prohibits discrimination on the basis of race, color, religion, or national origin.

**Title VII of the Civil Rights Act of 1964, as amended** - prohibits discrimination in employment on the basis of race, color, religion, gender, or national origin.

**Title IX of the Education Amendments of 1972** - prohibits discrimination on the basis of gender.

**Age Discrimination in Employment Act of 1967 (ADEA), as amended** - prohibits discrimination on the basis of age with respect to individuals who are at least 40.

**The Equal Pay Act of 1963, as amended** - prohibits sex discrimination in payment of wages to women and men performing substantially equal work in the same establishment.

**Section 504 of the Rehabilitation Act of 1973** - prohibits discrimination against the disabled.

**Americans with Disabilities Act of 1990 (ADA)** - prohibits discrimination against individuals with disabilities in employment, public service, public accommodations, and telecommunications.

**The Family and Medical Leave Act of 1993 (FMLA)** - requires covered employers to provide up to 12 weeks of unpaid, job-protected leave to "eligible" employees for certain family and medical reasons.

**The Pregnancy Discrimination Act of 1978** - prohibits discrimination in employment on the basis of pregnancy, childbirth, or related medical conditions.

**Florida Educational Equity Act (FEEA)** - prohibits discrimination on the basis of race, gender, national origin, marital status, or handicap against a student or employee.

**Florida Civil Rights Act of 1992** - secures for all individuals within the state freedom from discrimination because of race, color, religion, sex, national origin, age, handicap, or marital status.

**School Board Rules 6Gx13- 4A-1.01, 6Gx13- 4A-1.32, and 6Gx13- 5D-1.10** - prohibit harassment and/or discrimination against a student or employee on the basis of gender, race, color, religion, ethnic or national origin, political beliefs, marital status, age, sexual orientation, social and family background, linguistic preference, pregnancy, or disability.

*Veterans are provided re-employment rights in accordance with P.L. 93-508 (Federal Law) and Section 295.07 (Florida Statutes), which stipulate categorical preferences for employment.*

REVISED 8/1/01